

Visual Monitor

For Video Commander®



User's Guide

IRIS TECHNOLOGIES, Inc.

Westmoreland Industrial Park

Greensburg, PA 15601

IRIS Monitor User's Guide

Version 3.03 released February 14, 1997.

Manual print date, February 14, 1997

Copyright© 1993-1995 by IRIS Technologies, inc. All rights reserved, transmitted, transcribed, stored in a retrieval system, or translated into any language or computer language in any form or by means electronic, magnetic, optical, chemical, manual or otherwise, without the prior written permission of IRIS Technologies, Inc.

IRIS Technologies, Inc. , Makes no representations or warranties with respect to the contents hereof, and specifically disclaims any implied warranties of merchantability or fitness for any particular purpose. Further, IRIS Technologies, Inc., reserves the right to make changes from time to time in the content hereof without obligation to notify any person of such revisions and changes.

The IRIS Video Commander system technology is registered under United States patent number 5,144,548.

Video Commander® is a registered trademark, and Smart Switch is a trademark of IRIS Technologies, inc.

Microsoft and MS-DOS are registered trademarks, and Windows 95 is a trademark, of Microsoft Corporation.

WinTV CinemaProN is a trademarked product of Hauppauge.

Table of Contents

Overview	1
The Hardware	1
The Software	1
Installation	3
IRIS Monitor Software.	3
Using the IRIS Monitor	9
The Main IRIS Monitor Panel	9
Previewing	10
One-Touch Routing	11

Overview

This manual describes the IRIS Monitor, an extension to the Video Commander Desktop Control system which allows you to view video signals right on your PC screen. Now you are able to check signal quality from your workstation.

The Hardware

The hardware recommended by IRIS Technologies for the IRIS Monitor is the WinTV CinemaProN from Hauppauge. This board can be added to an IBM-compatible personal computer to give that computer video display, capture, and overlay capabilities.

The Software

IRIS Monitor software integrates the WinTV card with the Video Commander screen, not only providing a new destination device but also offering the display, positioning, sizing, and color and volume controls within that screen. These features can even be placed under the control of the video Commander macro language.

This manual describes the installation of the IRIS Monitor software. Hardware installation will be covered by the hardware manufacturer. This manual also provides details about the controls available in the IRIS Monitor and offers some notes on using the controls from within the IRIS macro language. Lastly, it describes the unusual case of using the IRIS monitor as its own router.

Installation

In order to install the IRIS Monitor software, you must already installed and have working Video Commander system, as outlined in your Video Commander Administrator's Guide. If you have not, please do so before proceeding with this process.

The installation of the IRIS Monitor involves a number of steps. You must load the IRIS Monitor software to tie everything into the Video Commander system.

IRIS Monitor Software

This chapter presents the process of setting up the IRIS Monitor extensions to the Video Commander. Before following these steps, you must have installed and have working a WinTV CinemaProN video card from Happauge. Once you are sure the card has been installed, has a video source connected to it and is working, you can move on.

Step 1: Plan your IRIS Monitor arrangement.

The IRIS Monitor is, in its simplest form, essentially just another destination device within the Video Commander system. However, you have several options for how to tie it into your routing system.

The IRIS Monitor can only display one incoming video signal, but it can draw this signal from any of three inputs. This “routing” is not terribly useful if the device is connected to a router, so the typical arrangement is to connect Video Input 0 to a router, and either leave inputs 1 and 2 unconnected, or connected to special video sources which are not routed through the network. You may, however, choose to create additional destination devices for inputs 1 and 2, especially if you are drawing from more than one video routing plane.

All three video inputs use RCA phono plugs; if your router uses BNC connectors you will need a converter cable.

However you decide to configure your IRIS Monitor, you should be prepared before you do the initial installation of the extension software.

Step 2: Start Setup

You need to run the Video Commander Setup program. If you are installing the extensions on the computer which runs the Video Commander Server program, there should already be an icon in the “Video Commander” section of

Program menu for this purpose, which you can simply double-click.



Click here to begin IRIS Monitor setup.

Step 3: Add an extension

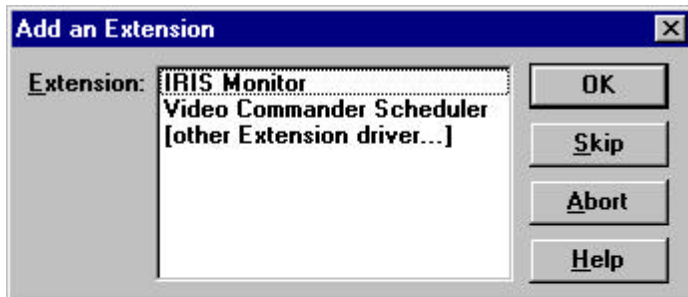
At the main Setup dialog, click the "Add Extension" button.



Video Commander setup will ask you to insert the extensions disk:



Insert the disk and click “OK”. You’ll soon see the “Add an Extension” screen.

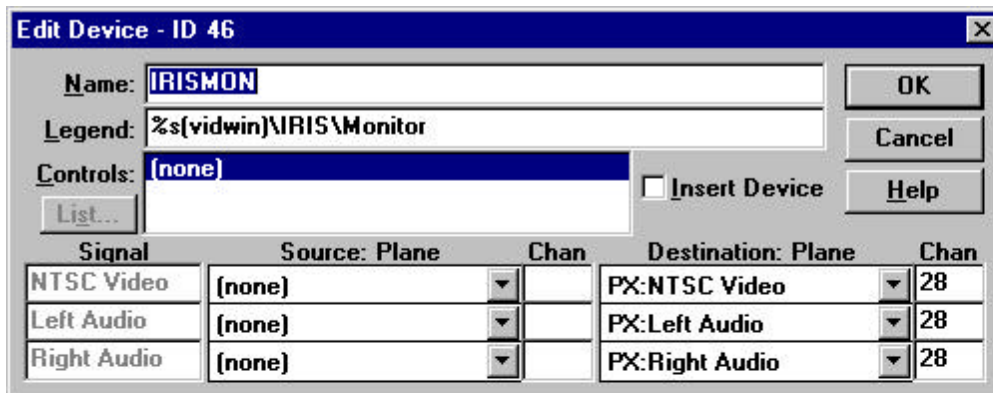


Step 4: Select the IRIS Monitor Extension.

This should appear on the list of selections. After selecting “IRIS Monitor”, click the “OK” button.

Step 5: Configure the IRIS Monitor Device.

Setup now creates a device for the IRIS Monitor. This is the device to which you route signals for them to appear on the screen. The default device name, button legend and control panel values are provided for you. Setup also picks router planes and channel numbers for one destination each for video, left audio and right audio. If you wish, you can change the device name or button legend; the control panel should be left unchanged. If you have already attached the IRIS Monitor to your routing hardware, on different planes and/or channels than those Setup picks, you can enter the correct values here.



If you wish to ignore the audio section, you can deselect the audio signals now, or if you intend to make the IRIS Monitor's sound output an audio source, you can add that now. (If you want devices for additional video and/or audio destinations, you will have to manually create additional devices later).

Click the “OK” button to proceed.

Step 6: Exit Setup

Setup automatically creates the twenty-seven controls associated with the IRIS Monitor. And the installation is complete. The IRIS Monitor extension has been installed. Now follow the on screen instructions to exit setup.

Step 7: Test the IRIS Monitor

Start Video Commander on your system as you normally do.

Log in, if required, and touch the “Tools” button. Then touch “All Devices”. A new device should appear, identified as the IRIS Monitor. This button will also have the symbol which indicates a control panel.



This is the new IRIS Monitor button you have just created. Notice it also displays a symbol indicating it is a control panel.

Touch “Dev Ctrl” and then the IRIS Monitor button. A panel should appear on top of your Video Commander screen which is primarily a small monitor screen (See the illustration on the next page). Test it by routing a video source to the IRIS Monitor device; the picture should appear on the screen as soon as you touch “Done”. (You may have to temporarily move the IRIS Monitor panel out of the way to access the device buttons you need).



Note: If, instead of a live video picture or a black rectangle, you see a solid, vivid pink rectangle, this indicates that something is wrong with the installation of the Hauppauge hardware or the IRIS Monitor extensions. Review the steps you followed so far before calling IRIS Technologies for support.

The IRIS Monitor will capture "NTSC video from the "Video 0" connector by default, unless you modify the setup string. (You can change formats and inputs at any time from within Video Commander, as discussed in the next chapter). If the wrong video source is selected, you will see a solid black screen. If the video standard being input does not match the standard IRIS Monitor is expecting, the picture will be black and white with some distortion.

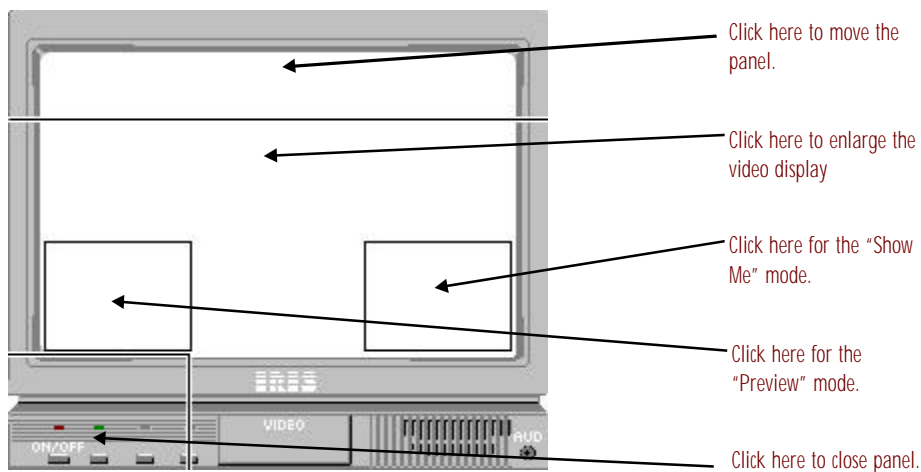
You can change the starting input and video standard settings for the IRIS Monitor in the Setup program. To do this, edit IRISMON (or whatever name you chose for the IRIS Monitor driver) in the Drivers list. In the "parameters" field, enter a "1" or "2" to select "Video 1" or "Video 2" as the default input instead of "Video 0", and/or a "P" to expect PAL video instead of NTSC.

Using the IRIS Monitor

Once you have installed the IRIS Monitor extensions to the Video Commander Desktop Control system, you'll be able to route signals to the IRIS monitor device button and view the IRIS monitor screen, which includes two function buttons. The IRIS Monitor device button behaves no differently for building, modifying and closing routing jobs than any other valid Video Commander destination device button.

The Main IRIS Monitor Panel

The main IRIS Monitor panel is designed to look like a monitor. It is fairly small to avoid taking up much space on the Video Commander screen. However, within that space, there are actually five buttons.



The functions available on this panel are as follows:

Move the panel

The top portion of the IRIS Monitor is equivalent to the standard "Move" button on most Video Commander panels. You can drag the panel by this area with your mouse or touch screen.

Enlarge Video Display

Touching the middle of the “screen” on the monitor will temporarily enlarge the video picture to fill your entire computer screen, obscuring everything else. Touching anywhere on the screen, clicking your mouse, or pressing a button on your keyboard (if present) returns the live video to its normal size.

Close the IRIS Monitor

The bottom left corner of the panel, depicted with an “On/Off” switch, is equivalent to the standard “Close” button on most Video Commander panels.

Show Me Button

An area in the lower right of the “screen” is marked as the Show Me button. While on, the Show Me mode will display on the IRIS Monitor screen the video signal from any valid source device you touch. This is discussed in more detail in “One-Touch Routing Section”.

Preview Button

An area in the lower left of the “screen” is marked as the Preview Button. This defines the IRIS Monitor screen as a preview device for routings allowing you to preview your source before routing it. Any time you touch a source device for starting a route, append or insert, its signals are immediately routed to the preview device, so you can make sure you picked the source you want before you complete the job.

Previewing

While the ability to do routing previews is a standard part of Video Commander, it becomes much more convenient using the IRIS Monitor screen.

Step 1: Touch the “Preview” Button.

The “light” on the button goes on. If the IRIS Monitor device button is visible, you will also notice a small symbol of an eye appear on that button.

Step 2: Perform Your Route.

Each time you touch a source device for a route, append or insert, it is shown on the IRIS Monitor display immediately. Since this preview is accomplished by an extra routing, you will also see that the device buttons for the source device and the IRIS Monitor device immediately show that link.

Step 3: Touch the “Preview” Button Again.

When you no longer wish to use the IRIS Monitor as a preview device, touching the “Preview” button again turns off its light, the eye symbol on the IRIS Monitor device button, and the special behavior. The IRIS Monitor screen will still be linked to the most recent source device until you unlink it.

The “Preview” button is equivalent to using the “Choose Preview” and “Remove Preview” buttons already in the Video Commander.

One-Touch Routing

The Video Commander allows you to designate a particular device as the automatic destination. In this mode, touching any valid source device immediately forms a link from that source to the designated destination.

If you want to use the IRIS Monitor to look at various source devices, without routing or interrupting existing routings, you can use this capability. This is provided with the “Show Me” button.

Step 1: Touch the “Show Me” Button.

The light on the button goes on. At the top of the screen, the Routing, Append and Insert buttons are all raised (deselected) to indicate an alternate mode of operation.

Step 2: Touch Any Source Device.

With that single touch, a link from the source to the IRIS Monitor is appended (any existing connections with the source device are unmodified). If something was already routed to the IRIS Monitor, that link is first broken.

Step 3: Touch the “Show Me” Button Again.

Alternately, you can touch “Done”, or one of: “Routing”, “Append” or “Insert”. The light on the “Show Me” button goes out and a normal routing mode returns.

The “Show Me” button is equivalent to using the “Choose Dest” and “Remove Dest” buttons already in the Video Commander.

Summary: You have now installed and worked with the Video Commander IRIS Monitor. Remember, eventhough the monitor is an optional extension of the Video Commander program, there are no special considerations when using the IRIS monitor in routing jobs, it behaves just like any other destination.

Index

H

Recommended hardware 1

I

Installation 3,5,7

O

Overview 1

P

The monitor panel 9 - 10

R

One-Touch routing 11

S

IRIS Monitor software 1,3,10

