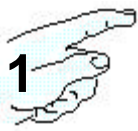


IRIS TECHNOLOGIES, INC.

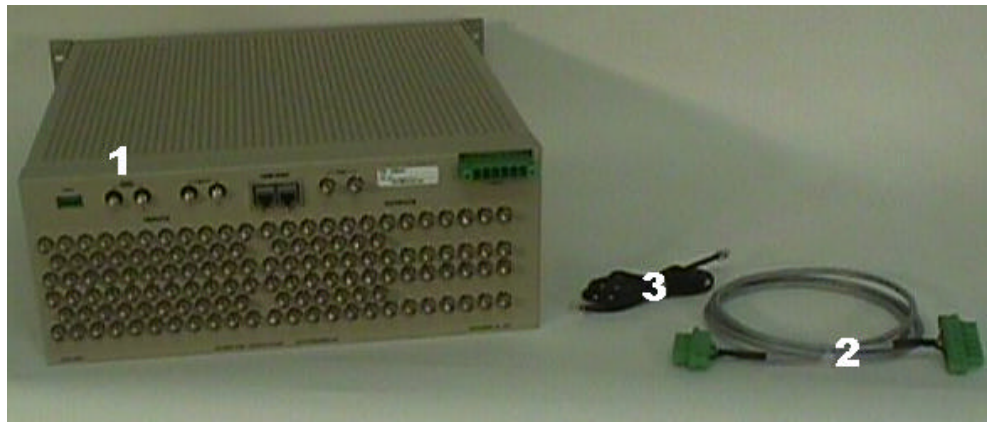
Quickstart for installing a new Vision 64 Video Router



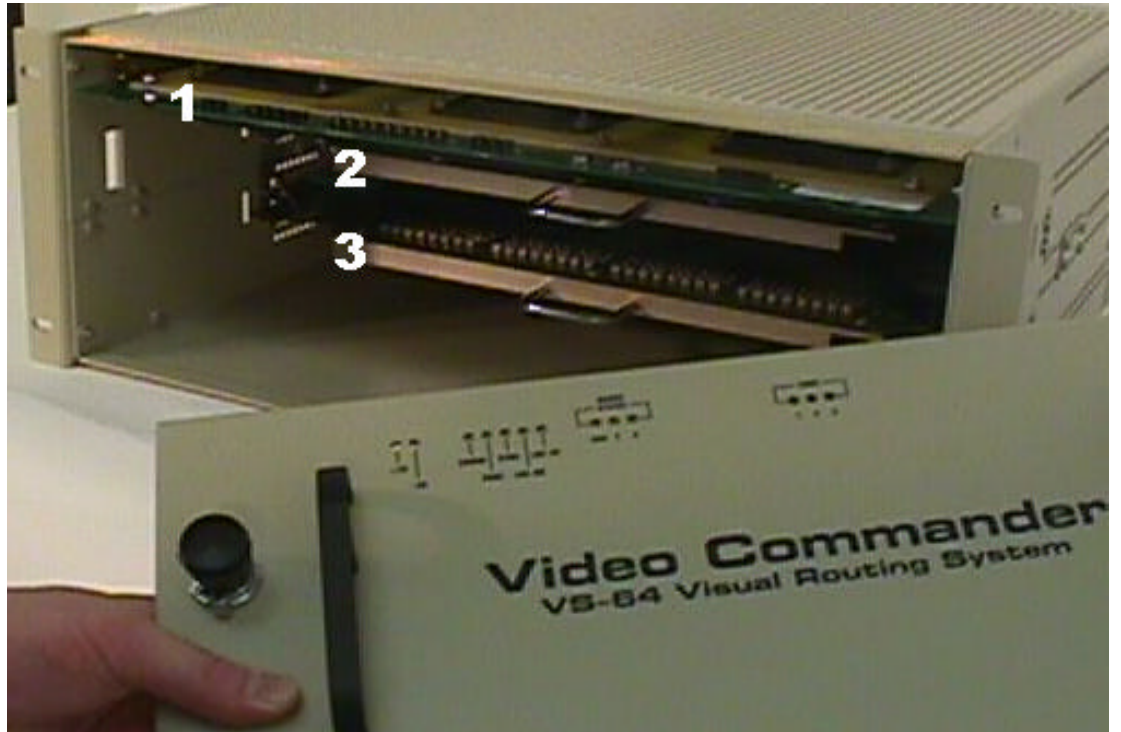
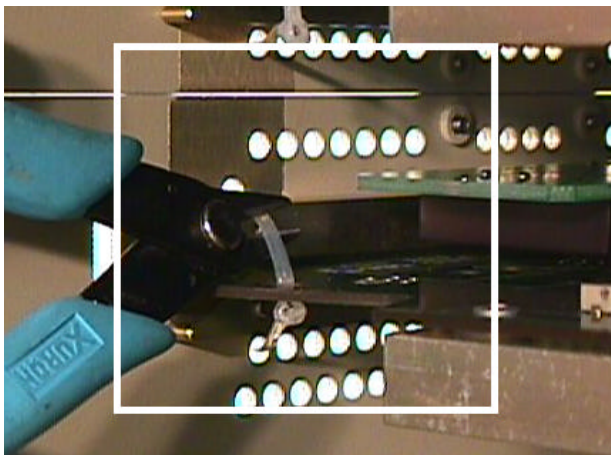
Begin. Please check the contents:

1. The VS64V router
2. A six foot power cable
3. A seven-foot data loop cable

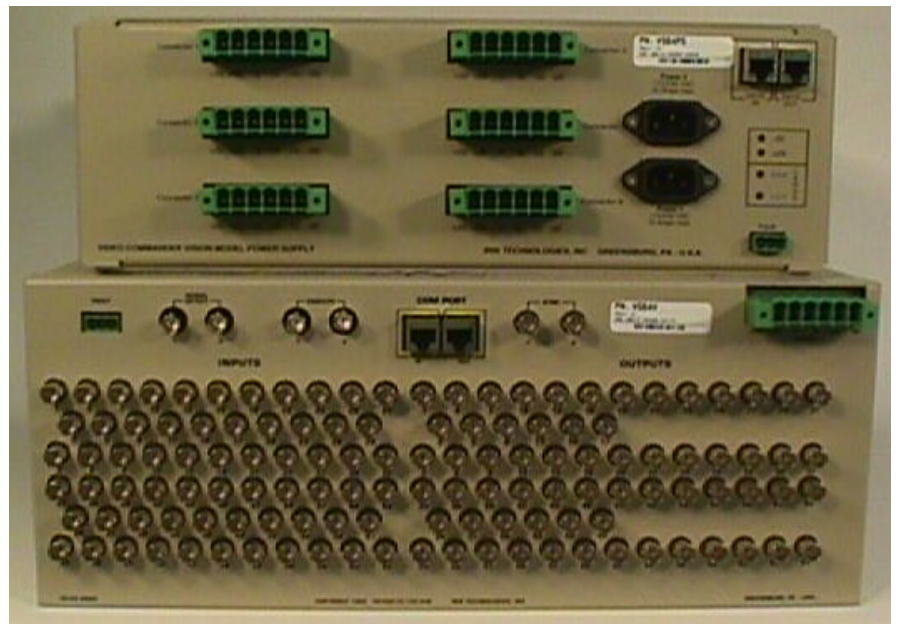
CAUTION
 ⚡ Static Sensitive! ⚡
 Take care to avoid static discharge to the unit!



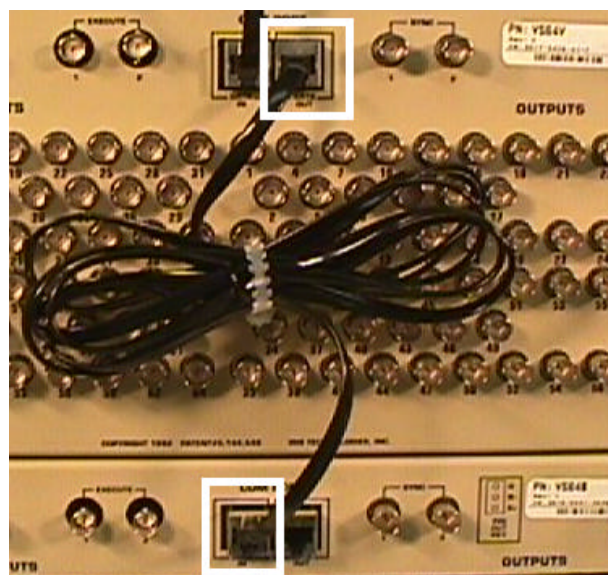
Preparing the Router. Remove the front cover of the router by turning the knobs counter-clockwise. There are three PCB boards inside (see right). The top board, #1, is the CPU card. The next two down, #'s 2 and 3, are crosspoint boards. Verify all PCB's are securely seated into the backplane I/O. If a board has been unseated during shipping, simply re-seat by pushing firmly on the front edge of the board. You'll feel it go in. Cut and remove the shipping wire ties on each side of the crosspoint boards (see below) and replace the front cover.

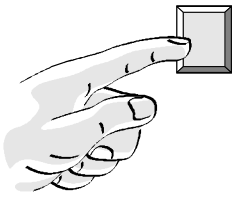


Rack mount router and power supply. The vision power supply (shown below) is shipped in a separate box. It comes with a six and a half foot A/C power cord. Unwrap the power supply and mount it in your equipment rack. Mount the router below the power supply (see right).



Connecting to the Data Port. A 422 converter is packed in the same box as your software and Important Documents. Connect the end with the phone type connector to the "Data In" port on the 64 router (below left). Connect the other end to the Com port of your computer. If additional routers are being added in line, use your Data Loop cable (shown in step 1) to go from the "Data Out" port on the first unit to the "Data In" port on the next unit (below right).



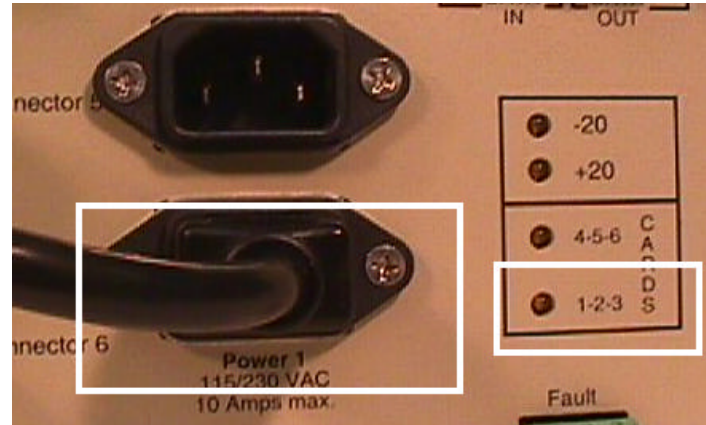
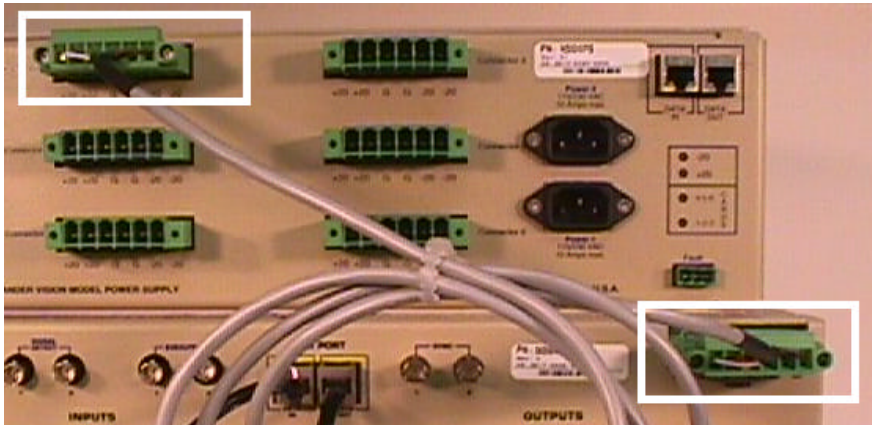


IRIS TECHNOLOGIES, INC.

Quickstart for installing a new Vision 64 Video Router

5

Connecting the power. The gray power cable shipped with your power supply has a green six-position connector on each end. Attach one end to the power supply at the slot marked "Connector One". Attach the other end to the router at the slot marked "Power" (below left). Now attach the black power cord to the slot marked "Power One". Plug the other end into a standard 110-volt wall outlet. The yellow LED's marking the 1-2-3-card levels will light (below right).



6

Done. That's it! You can now move on to adding your devices as well as installing and setting up your software. You'll find useful and more detailed information in the "Vision 64 and 128 User's Manual" provided with your system. Please refer to the "**Quickstart for software installation sheet**" as well as the **Video Commander setup and user's guides** packaged with your software.

NOTE: If you are installing additional routers, as would be the case with a video, stereo audio setup, do so now before moving onto software. Install the next router beneath the first. Instead of connecting each unit to the computer, simply use your Data Loop Cable as shown in step 4. Go from the "Data Out" jack on the top unit to the "Data In" jack of the next unit as described in step 4.