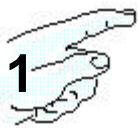


# Quickstart for installing a PX3200 Router



**Begin.** Please check the contents:

1. PX3200 router
2. Power supply with 2 cables
3. Audio connectors, up to 4 bags of 33 each
4. 7' data loop cable



**CAUTION**  
 Static Sensitive!  
 Take care to avoid static discharge to the unit!

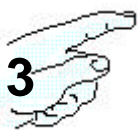
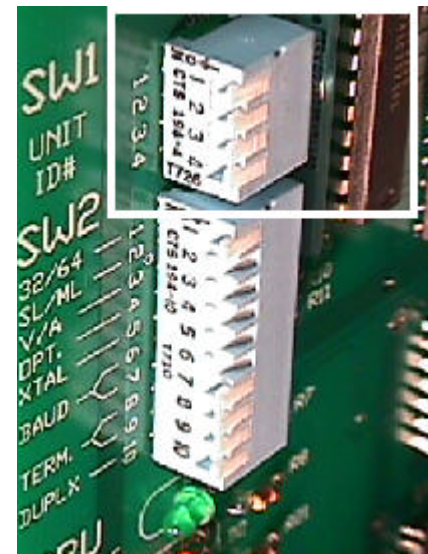


### Setting the address.

**IMPORTANT:** Each Video Commander router in your installation requires a unique address. Duplicating addresses will result in routing failure.

1. Remove the front panel.
2. Locate the dip switches on the CPU card (see right). You will set ONLY SW1, SW2 is factory set.
3. Determine the addresses, if any, currently in use by your system. (Contact IRIS Technologies if you need assistance, (724) 832-9855).
4. Select an address **not currently used by your system** and set the dip switch to that address using information from the table below.
5. Replace the front cover. (No routing can occur unless the front cover is secured).

Address	0	4	8	12	16	20	24	28	32	36	40	44	48	52	56
Switch 1	Off	On	Off	On	Off	On	Off	On	On	On	Off	On	Off	On	Off
Switch 2	Off	Off	On	On	Off	Off	On	On	Off	Off	On	On	Off	Off	On
Switch 3	Off	Off	Off	Off	On	On	On	On	Off	Off	Off	Off	On	On	On
Switch 4	Off	Off	Off	Off	Off	Off	Off	Off	On	On	On	On	On	On	On

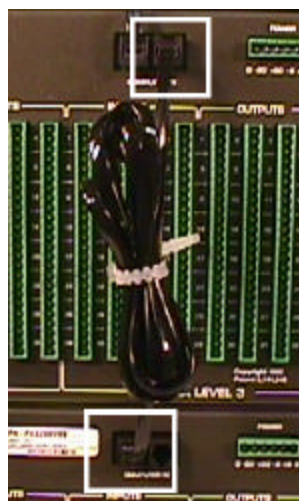
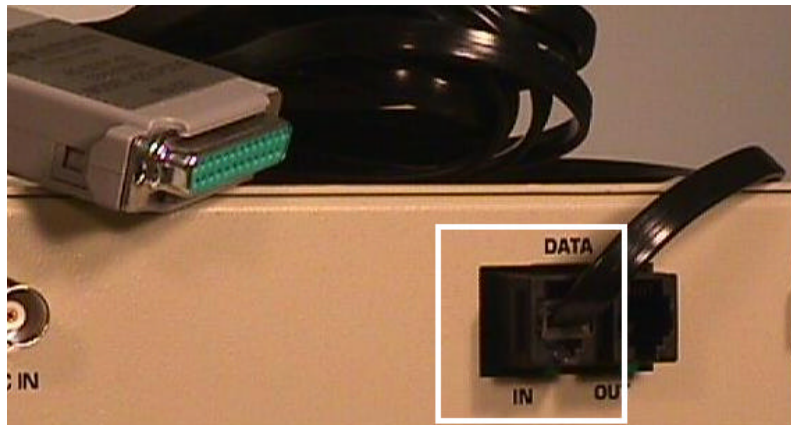


### Connecting to the Data Port.

**A.** If this is the first router to be installed, connect the data cable from the RS422 converter (located in the box marked "Important Documents Inside") to the "Data In" port on the router as shown (below left).

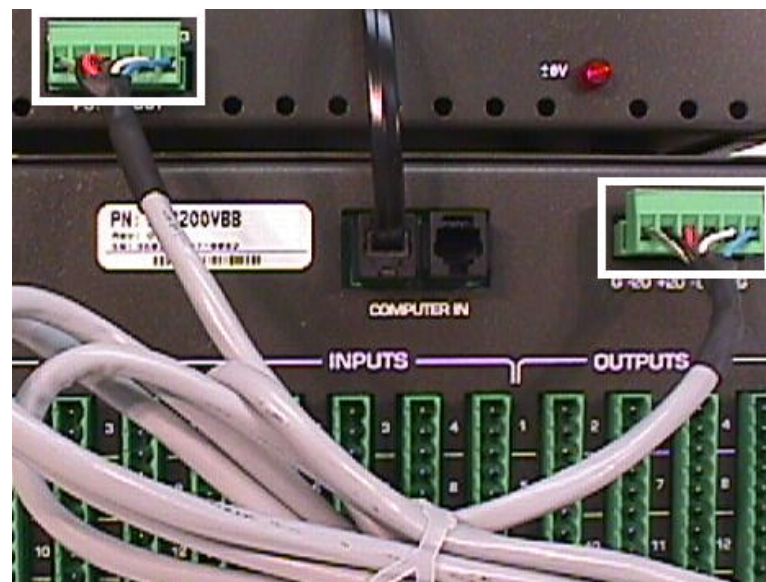
-OR-

**B.** If this is an additional router, connect one end of the supplied data loop cable to the "Data Out" port on your existing router and the other end to the "Data In" port on the next router as shown (below right).



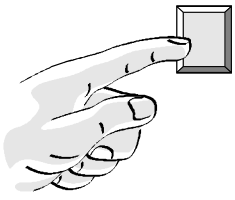
### Connecting the power.

1. Locate and connect the DC power cable to the router and power supply as shown at right (this cable has 2 identical 6-pin connectors attached).
2. Connect the 120-volt AC power cord to the power supply and wall outlet.
3. Press the on/off switch on the front of the power supply. The power indicators on the front of the router will be lit.



The installation of the router is now complete. If you have more routers to install, please refer to the quick install sheet packed with each router. **If this router is being added to an existing installation, please continue with the software setup on the back of this page.**





The following step should be used only if you are adding this router to an existing installation. This step is not necessary for new installations.

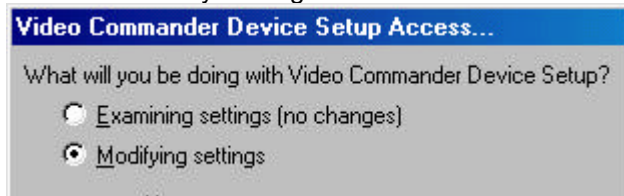


**Software** To complete the router installation, follow the steps below for adding your router to Video Commander version 3.5 software. If you have not installed the software please refer to the "Quickstart for Video Commander Software Installation" then continue.

1. Run Device Setup



2. Select Modify Settings



3. Select + routers from the screen



4. Enter the information into the routers properties box. Below is an example for a PX3200VBB. PX series routers require you add 3 routers in software setup, even if your model is something other than a VBB (ie. V, VB, BB, or B).

Choose a unique name

Enter the address chosen from step 2, "Setting the address".

Leave this blank, there is no eeprom serial number on PX routers

Add 1 to the address information in step 2 and enter here

Add 2 to the address information in step 2 and enter here

Specify the computer port being used

Choose the type of signal this router is to carry

This field is for your own reference and is completely optional

5. Enter the information for the first routing level, (in the example shown above left it's Video). Complete the information then select OK, repeat from step 3 until all router levels have been entered. The example above represents a VBB configuration.

6. Once you've finished with all levels, select Apply.

