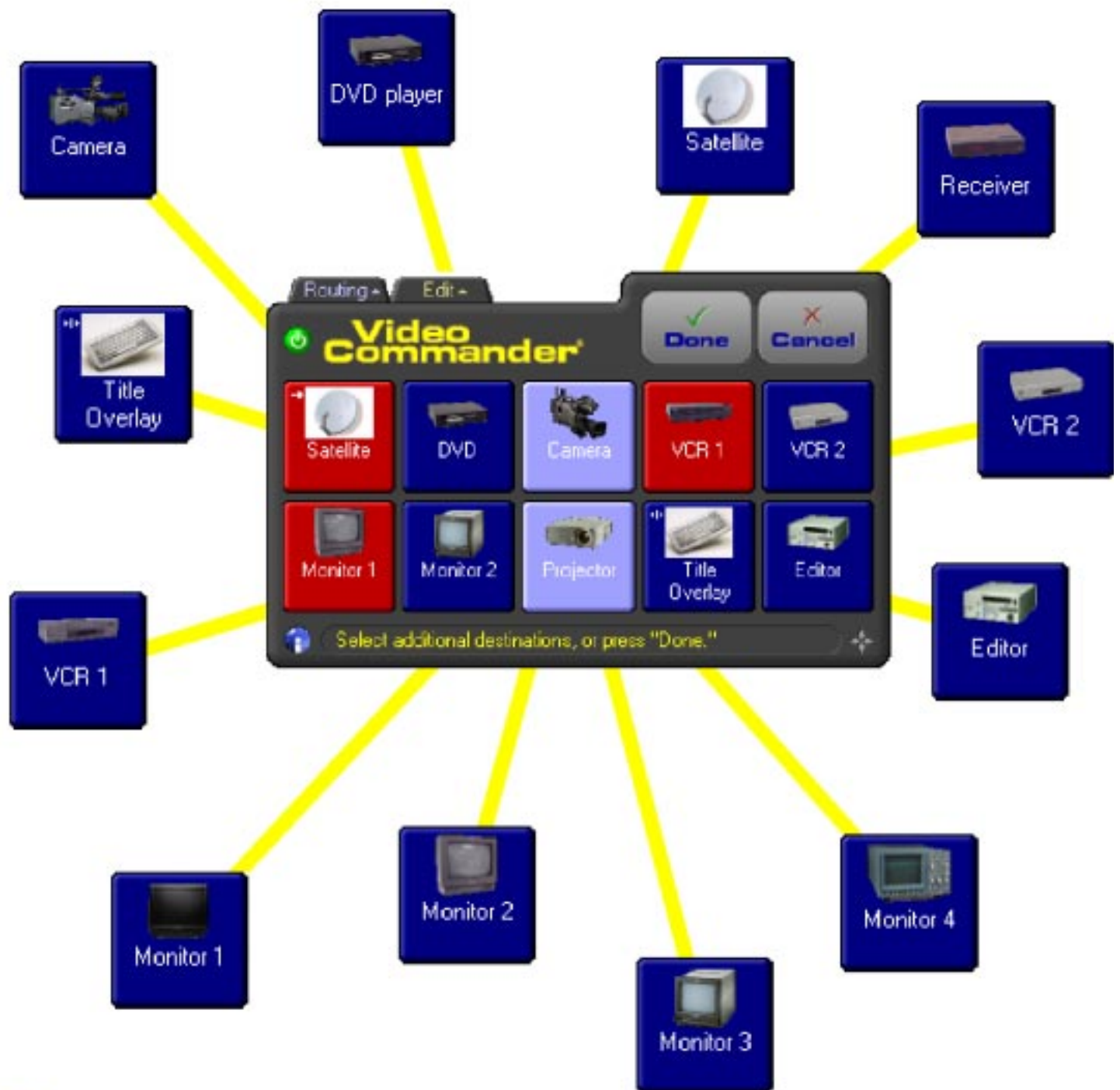


Video Commander[®]

Beginner Edition

User's Guide



IRIS Technologies, Inc.

TABLE OF CONTENTS

INSTALLATION	
Installing the Router Hardware	3
Installing the Software	4
Adding Devices	5
ROUTING	
The Video Commander Routing Panel	7
Making a Route	8
Breaking a Route	9
Adding a Device to an Existing Route	10
Inserting a Device within an Existing Route	11
Locking / Unlocking Devices	12
EDITING	
Adding a Device Button	13
Moving a Device Button	14
Removing a Device Button	15
Changing a Device Button	16
Changing Program Settings	17
The Device Report	18
TROUBLESHOOTING	
Installation Questions	19
Device Setup Questions	20
Program Operation Questions	21
INDEX	22

Video Commander Beginner Edition User's Guide

Copyright © 2003–2004, IRIS Technologies, Inc.

Technical Support

Our customer support staff is always ready to assist you with your Video Commander System. There are many ways to contact Technical Support. It would be helpful if you are near your computer when you call. This will help us find a solution quickly and efficiently.

Electronic Mail: support@iristech.com
World Wide Web: http://www.iristech.com
Technical Support: 1-800-354-4747
 Monday-Friday, 9:00 am-5:00 pm, EST
Technical Support Fax: 1-724-832-8999

No part of this publication may be reproduced, transmitted, transcribed, stored in a retrieval system, or translated into any language or computer language in any form or by any means electronic, magnetic, optical, chemical, manual or otherwise, without the prior written permission of IRIS Technologies, Inc.

IRIS Technologies, Inc. makes no representations or warranties with respect to the contents hereof, and specifically disclaims any implied warranties of merchantability or fitness for any particular purpose. Further, IRIS Technologies, Inc. reserves the right to make changes from time to time in the content hereof without obligation to notify any person of such revisions and changes.

The IRIS Video Commander is registered under United States patent number 5,144,548.

Video Commander is a registered trademark of IRIS Technologies, Inc. Windows is a registered trademark of Microsoft Corporation. All other brand and product names are trademarks or registered trademarks of their respective owners.

1

INSTALLATION

This chapter describes setting up your Video Commander system for the first time.



locate the router



connect the power



connect RS-422 converter to PC



connect cable to "DATA IN," and terminator to "DATA OUT"



Follow these steps to connect your routing hardware to your PC.

The first task in installing your new Video Commander system is connecting the router—the signal connection box—to your PC.

1 LOCATE THE ROUTER

Place the router unit in a location central to the devices whose signals it will route. The router is designed to be installed in a standard 19" equipment rack.

2 CONNECT THE POWER

Plug the power supply into the power connector on the back of the router. Connect an AC power cord from the power supply to a standard wall outlet. The "POWER" light on the front of the router should glow.

3 CONNECT YOUR PC

Connect the provided RS-422 converter to an unused serial port on your PC, using the 9-to-25-pin adapter if necessary. Connect the cable end of the converter to the "DATA IN" connector on the back of the router.

4 INSTALL THE TERMINATOR PLUG

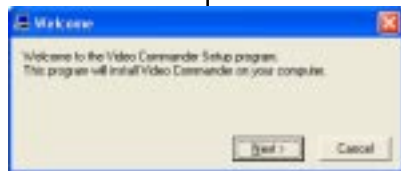
Insert the provided terminator plug in the "DATA OUT" connector on the back of the router.

NOTE: If your system came with more than one router hardware device, please refer to the accompanying "Quick Start" sheet for details on exactly how to connect the routers.

Follow these steps to install the Video Commander software.



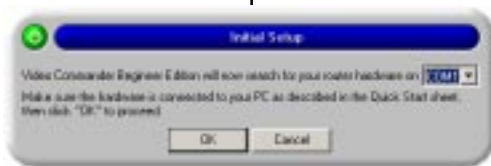
insert the CD



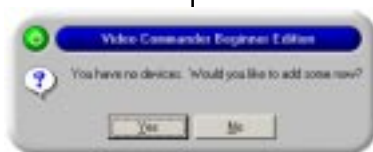
run the install



start Video Commander



choose port, then click OK



click YES

1 INSERT THE VIDEO COMMANDER CD

Place the Video Commander CD in the CD-ROM drive of your computer. The installation program should start automatically.

If the installation program does *not* start, use Windows Explorer to browse to the CD-ROM drive. Double-click the "SetupVCb" program to start it.

2 STEP THROUGH THE INSTALLATION

Follow the prompts for the installation. Unless you need to make changes, you can simply click the "Next" button for each step. After the software is installed, click the "Finish" button to leave the installer.

3 START VIDEO COMMANDER

On your "Programs" menu, choose the "Video Commander" folder, and click the "Video Commander" choice.

4 CHOOSE THE COM PORT

Since Video Commander has not been run before, it needs to find your router hardware. At the prompt, choose the COM port you used to attach the RS-422 converter, then click the "OK" button. Video Commander should locate your router.

NOTE: If Video Commander cannot find your router, check the COM port choice and the cables. See the "Troubleshooting" section of this manual for further assistance.

After Video Commander locates your router, you are asked if you want to create devices. Click the "Yes" button.

Follow these steps to add devices into your Video Commander system.



For each device whose signals you want to control with Video Commander, you must both create a device button and connect the device to the router.

1 NAME THE DEVICE

In the “New Device” screen, type a unique name for the device. (The “Preview” picture shows you what the device button will look like.)

2 CHOOSE A PICTURE FOR THE DEVICE

Each device button can have a picture. Click the “Choose” button next to the large image to pick a different image, or no image at all.

3 CHOOSE THE CONNECTION TYPE

If this device is a *source* of signals in your system, such as a satellite receiver, camera or DVD, click the “Source” choice. If this device is a destination for signals, such as a TV monitor, click the “Destination” choice. If this device is both a source and a destination, like a VCR, click the “Both” choice. And if this device passes signals through with changes, like a title overlay device, click the “Both” choice and the “Insert device” choice.

4 CHOOSE THE INPUT OR OUTPUT

In the “Connection” field, choose an input or output number on your router to use for the device. Only unused numbers are shown. Note that if your device is both a source and a destination, you are choosing a number that is free for both input and output.

continued >>>>>



5 CONNECT THE DEVICE

Connect the video and audio cables between your device and the selected input/output number on your router. For a source device, connect from the outputs of the device to the inputs of the router. For a destination device, connect from the outputs of the router to the inputs of the device. For a device that is both a source and a destination, connect device outputs to router inputs and router outputs to device inputs. Take care to connect video to video, left audio to left audio and right audio to right audio.

6 SAVE THE DEVICE

In the "New Device" screen, click the "OK" button to save your new settings. Video Commander will ask you if you want to add another device; as long as you still have devices to add, click the "Yes" button. When you are done, click "No."

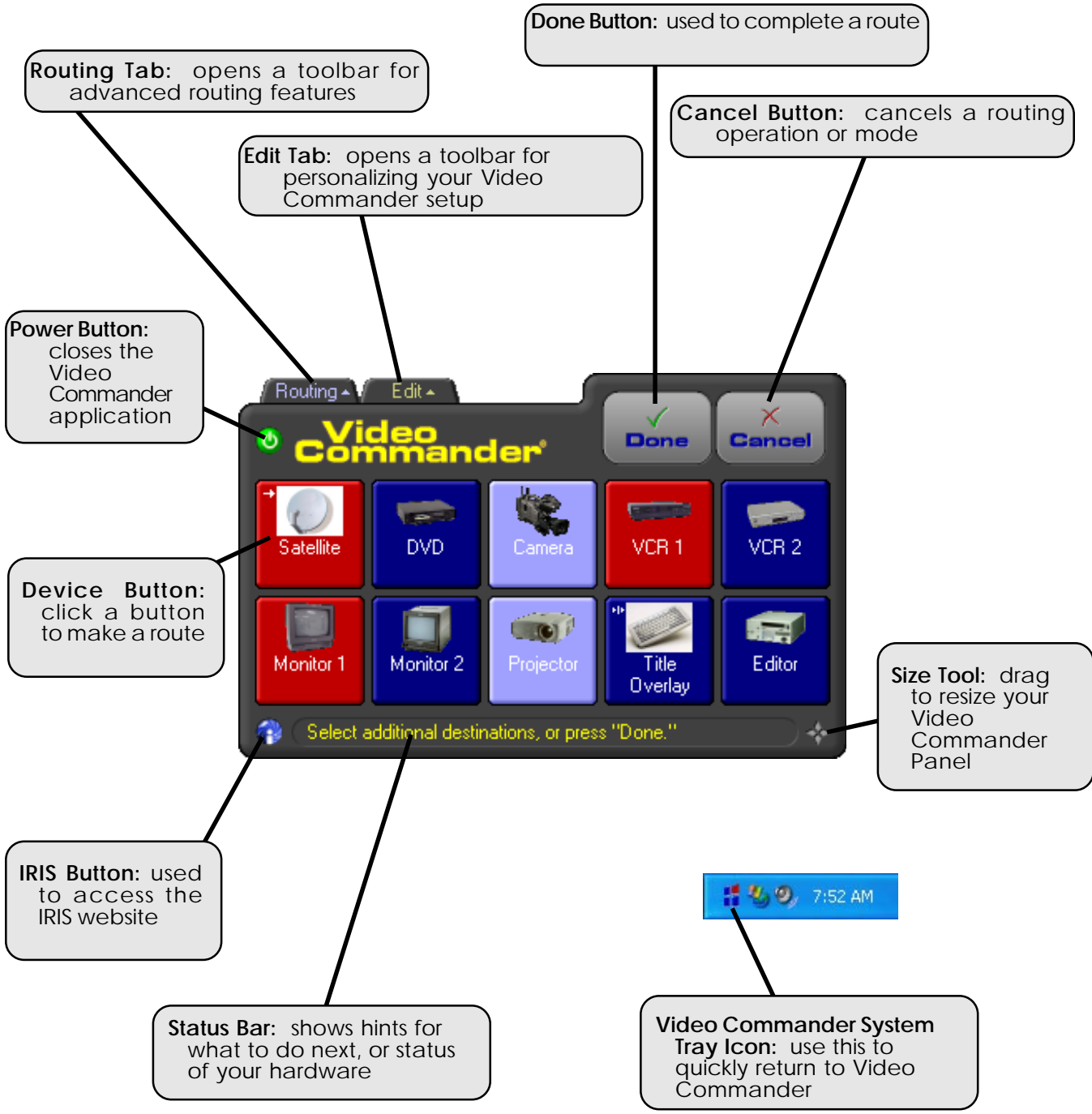
NOTE: You can always add or change devices later, or rearrange the buttons, as described in the "Editing" section of this manual, beginning on page 13. For now we're only concerned with setting up your initial devices so you can start using the Video Commander system.

2

ROUTING

This Chapter guides you through the routing processes of your Video Commander System.

THE VIDEO COMMANDER ROUTING PANEL



MAKING A ROUTE

Follow these steps to make a route with your Video Commander



click on a blue SOURCE device



click on a DESTINATION device



click DONE



devices are routed together

1 SELECT A SOURCE DEVICE

Click on the blue BUTTON representing your SOURCE device. The button will change to a lighter blue color.

2 SELECT A DESTINATION DEVICE

Click on the BUTTON representing your DESTINATION device. The button will also change to lighter blue.

3 COMPLETE THE ROUTE

Click on the DONE BUTTON to complete the route between the selected SOURCE and DESTINATION DEVICES.

TIP: Double-clicking on the DESTINATION DEVICE completes the route without having to click DONE.

You will notice that the devices in the route you just made are now a new, matching "job color." In addition, you will notice that there is an arrow in the corner of the source device, denoting it as the SOURCE.

If you want to route from your source to more than one destination, you would pick all of the destinations before clicking DONE. All of the routes are made at the same time when you click DONE.

Follow these steps to remove a route in Video Commander.



click on a routed device



click DONE



devices are no longer routed

1 SELECT A ROUTED DEVICE

Click on the BUTTON (not blue) representing the device to unroute. The button will blink between light blue and the job color.

2 COMPLETE THE UNROUTE

Click on the DONE BUTTON to remove the route(s).

If the device you selected was the source of the job (with the arrow in the corner), all routes from that source are removed. If the device you selected was a destination (no arrow), only the route between that device and its source is removed; if that source was also routed to other devices, those routes remain intact.

The unrouted devices return to the blue "no job" color.

ADDING A DEVICE TO AN EXISTING ROUTE

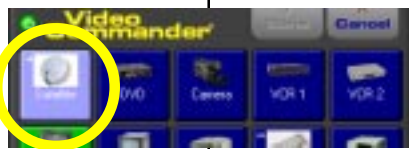
Follow these steps to add another destination device to an existing route.



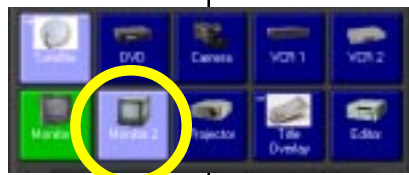
click on ROUTING TAB



click on the APPEND button



click on SOURCE DEVICE



click on additional DESTINATION DEVICE(S)



click DONE and the route is appended

1 OPEN THE ROUTING TOOLBAR

Click on the ROUTING TAB located at the upper left of your Video Commander Window.

2 SWITCH TO APPEND MODE

Click on the APPEND BUTTON in the Routing Toolbar.

3 SELECT THE SOURCE DEVICE

Click on the SOURCE of an existing route.

4 SELECT THE ADDITIONAL DESTINATION DEVICE

Click on the additional DESTINATION device(s).

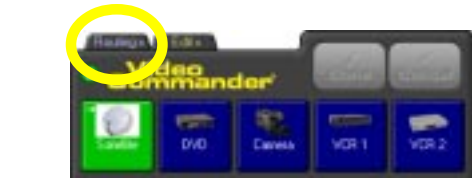
5 COMPLETE THE ROUTE

Click on the DONE BUTTON to complete the appended route.

TIP: If you are in Append Mode, clicking on any device will not break the route. In fact, switching Video Commander to *Append Mode* actually prevents accidental unroutes!

TIP: You can also append from any in/out device (like a VCR) that is presently a part of a route, whether it is a destination or a source. Routing from an in/out device continues the route through the device, and a pass-through arrow is shown on the in/out device to indicate this.

Follow these steps to add a device within the devices in an existing route.



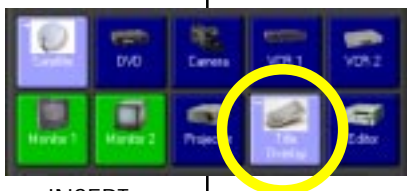
click on ROUTING TAB



click on the INSERT button



click on SOURCE DEVICE



click on INSERT DEVICE



click DONE and the device is inserted

1 OPEN THE ROUTING TOOLBAR

Click on the ROUTING TAB located at the upper left of your Video Commander Window.

2 SWITCH TO INSERT MODE

Click on the INSERT BUTTON in the Routing Toolbar.

3 SELECT THE SOURCE DEVICE

Click on the SOURCE of an existing route.

4 SELECT THE INSERT DEVICE

Click on the INSERT DEVICE you want to insert within the existing route. Devices you installed as "insert devices" show an insert symbol in the corner of the button.

5 COMPLETE THE ROUTE

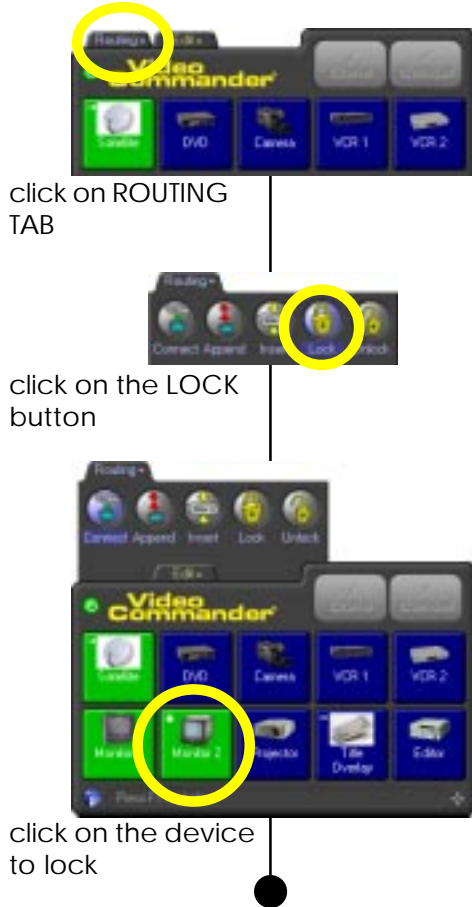
Click on the DONE BUTTON to complete the inserted route.

You will notice that the device you inserted has two arrows in the corner, indicating that the signal is passing through the device.

If you unroute an insert device, it is *extracted* from the route, rather than breaking the job passing through it.

LOCKING/UNLOCKING DEVICES

Follow these steps to lock or unlock a device.



Locking a device prevents anyone from accidentally routing or unrouting important signals, forcing you to the extra step of unlocking a device before making changes.

1 OPEN THE ROUTING TOOLBAR

Click on the ROUTING TAB located at the upper left of your Video Commander Window.

2 SELECT LOCK

Click on the LOCK BUTTON in the Routing Toolbar.

3 SELECT THE DEVICE TO LOCK

Click on the device you want to lock.

You will notice that the device you locked has a small lock icon in the corner. Video Commander will not allow you to change the routes at that device.

To unlock a device, click the UNLOCK BUTTON, then the device that you want to unlock.

3

EDITING

This Chapter guides you through the process of modifying your Video Commander System.

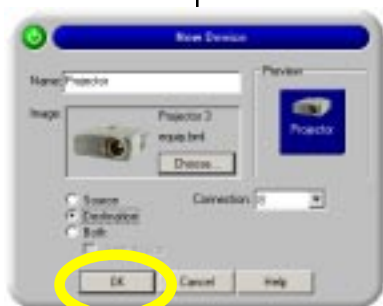
ADDING A DEVICE BUTTON



click on EDIT TAB



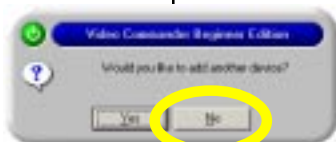
click on the NEW DEVICE button



enter device details and click OK



connect cable between device and router



click NO



Follow these steps to add a device button to your Video Commander Routing Panel.

1 OPEN THE EDIT TOOLBAR

Click on the EDIT TAB located at the top of your Video Commander Window.

2 OPEN NEW DEVICE WINDOW

Click on the NEW DEVICE BUTTON to open the New Device window.

3 ENTER THE NEW DEVICE INFORMATION

Type in a unique name for the device, choose an image, select the connection type and choose the connection number. These tasks were all described on pages 5-6.

4 CONNECT THE DEVICE

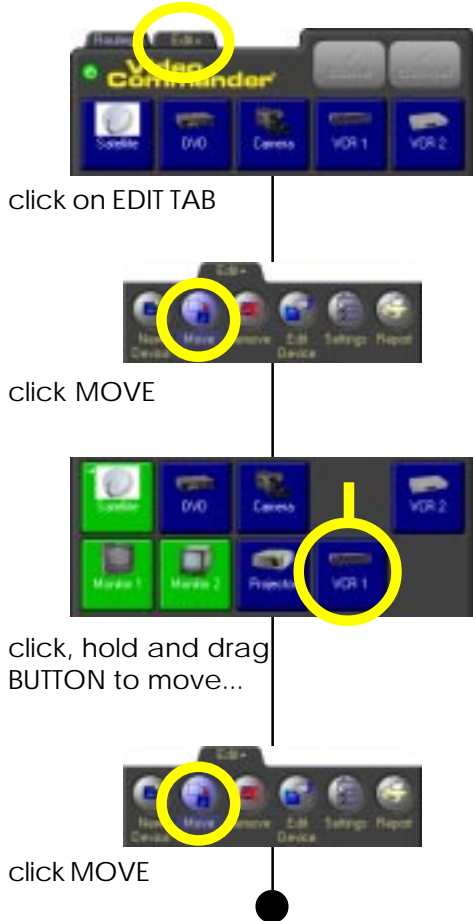
Connect the cables between your new device and the chosen router input/output connectors.

5 SAVE YOUR CHANGES

Click the "OK" button to save your new device information. Video Commander will ask if you want to add another device; click "Yes" or "No" as appropriate.

MOVING A DEVICE BUTTON

Follow these steps to move a button on your Video Commander Routing Panel.



1 OPEN THE EDIT TOOLBAR

Click on the EDIT TAB located at the top of your Video Commander Window.

2 SELECT MOVE

Click on the MOVE BUTTON to enter Move Mode.

3 MOVE BUTTON

Click on the device button you want to move. Then, hold and drag the button to a blank area on the panel. The button will appear in its new place on the Routing Panel.

You can move additional buttons (while still in Move Mode).

4 FINISH MOVING

Click MOVE again (or CANCEL) to exit Move Mode.

TIP: You can resize your panel to fit more buttons by dragging the sizing symbol in the lower right corner.

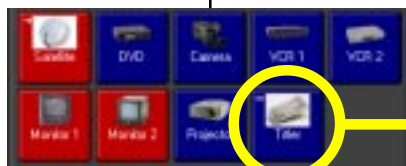
Follow these steps to remove a button from your Video Commander Routing Panel.



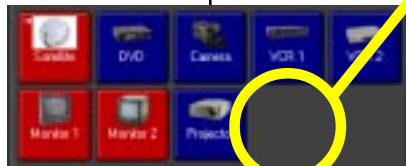
click on EDIT TAB



click REMOVE BUTTON



click on BUTTON to remove



click REMOVE BUTTON



1 OPEN THE EDIT TOOLBAR

Click on the EDIT TAB located at the top of your Video Commander Window.

2 SELECT REMOVE

Click on the REMOVE BUTTON to enter Remove Mode.

3 REMOVE BUTTON

Click on the device button you want to remove. The button disappears from your Video Commander Routing Panel.

You can remove additional device buttons (while still in Remove Mode).

4 FINISH REMOVING

Click REMOVE again (or CANCEL) to exit Remove Mode.

REMOVING A DEVICE BUTTON

CHANGING A DEVICE BUTTON

Follow these steps to modify a device button on your Video Commander Routing Panel.



click on EDIT TAB



click EDIT DEVICE



click on BUTTON to change



make changes, then click OK



click EDIT DEVICE

1 OPEN THE EDIT TOOLBAR

Click on the EDIT TAB located at the top of your Video Commander Window.

2 SELECT EDIT DEVICE

Click on the EDIT DEVICE BUTTON to enter Edit Device Mode.

3 SELECT BUTTON TO CHANGE

Click on the DEVICE BUTTON you want to change. The "Edit Device" window appears with the information for the selected device.

4 CHANGE THE DEVICE

Make any desired changes to the device name, image, connection type and input/output number.

5 SAVE CHANGES

Click the OK BUTTON to save your changes to the device.

6 FINISH CHANGING

If you have more device buttons to change, click them in turn. Otherwise, click the EDIT DEVICE button again (or CANCEL) to exit Edit Device Mode.

Follow these steps to change your program settings.



click on EDIT TAB



click SETTINGS



change settings,
then click OK

1 OPEN THE EDIT TOOLBAR

Click on the EDIT TAB located at the upper right of your Video Commander Window.

2 SELECT SETTINGS

Click on the SETTINGS BUTTON to enter the Settings Window.

3 CHANGE SETTINGS

Click on any of the checkboxes in the General section to engage or disengage each option.

Choose your default mode for Video Commander operation: CONNECT (clicks on device buttons either make or break routing connections); APPEND (clicks on device buttons add to existing routes); or NONE (clicks on device buttons have no effect until you select a routing mode).

Change the COM Port by clicking on the selection list. When you have finished changing your program settings, click OK.

TIP: The Help page for the Settings screen describes each of these settings in greater detail.



Follow these steps to see, or print, a report of your device connections.

THE DEVICE REPORT



click on EDIT TAB



click REPORT



click PRINT, then
click CLOSE

1 OPEN THE EDIT TOOLBAR

Click on the EDIT TAB located at the top of your Video Commander Window.

2 GENERATE A REPORT

Click on the REPORT BUTTON to generate a report showing each input and output on your routing hardware, and the device (if any) connected to each.

3 PRINT THE REPORT

If you want a printed copy of the report, click the PRINT BUTTON at the bottom of the display.

4 CLOSE THE REPORT

Click on the CLOSE BUTTON to remove the report when you are done with it.

4

TROUBLESHOOTING

This Chapter lists some solutions to questions or difficulties you might have with Video Commander.

The installer didn't start. What do I do?

On most PCs, the installer will start once you insert the CD in your drive. If it does not, start the Windows Explorer application. Browse to the drive letter representing your CD. You should see an application on the CD called "SetupVCb." Double-click that item to start the installer.

I got an error running the installation.

The problem may be one of permissions: on Windows 2000 or Windows XP, make sure you are logged in as a user with administrator rights (or ask such a user to perform the installation for you).

Also note that the installer does *not* work on some systems if started from a command prompt. Use the automatic startup, or double-click the SetupVCb application in Windows Explorer, to start.

Video Commander couldn't find my router.

This could be caused by choosing the wrong COM port. On many computers there is a single COM port connector which is *not* called the "COM1" device. If in doubt, try other COM port names.

If you are sure of the port, check the cable. Make sure the RS-422 converter is plugged into the COM port connector firmly (using the 9-to-25-pin adapter if needed). Make sure that the other end (looking like a telephone wire) is plugged into the "DATA IN" connector on the router. Make sure, too, that the terminator plug is connected to the "DATA OUT" connector.

If Video Commander indicates that the port is in use, check to see if another program is running that uses serial communications. This might be a "background" program such as Palm Hot Sync manager.

Some of my devices only have mono audio. Is this a problem?

Not really. For destination devices, just hook the audio to the left channel. (You won't hear the right channel on that destination, but in most video programs the two audio channels have sufficient overlap for this to not be a big problem.) For source devices, you may want to use a "Y" cable splitter to connect the audio to both the left and right router inputs.

Do *not* use a "Y" cable to connect two router outputs for a mono destination.

Some of my devices only use video, or only use audio.

A destination that only accepts video or audio is no problem at all; since you can route a source to several destinations, a destination without both signal types (a speaker, or a video monitor) is perfectly fine.

However, you can only route one source to your destinations, so a source which only provides video will make a route with no audio, and a source which only provides audio will make a route with no video.

If you need to mix signals from different sources in the same job, you need to talk to your IRIS Technologies sales representative about one of our more advanced editions of Video Commander.

Can I use the same input for video from one device and audio from another?

Yes... but only by treating the combination of both sources as the same "device." This version of Video Commander cannot have more than one device using the same input number (or output number).

I forget what connections I used for my devices.

Use the "Report" button on the EDIT toolbar (page 18).

Video Commander is showing a “hardware fault” and making a siren sound. What is this?

Your computer is no longer communicating with the router hardware. This may just be a communications failure (routing changes won't happen) or the router could be off (all the connections are broken). Check to see if the router is powered on (check the “POWER” light on the front), then check the cabling between your PC and the router. Once the router is back on and communicating, the correct connections will be restored.

Can I get rid of these sounds?

Yes. On the EDIT toolbar, click the SETTINGS button, then remove the checkmark next to the sounds you wish to suppress.

How can I avoid accidental unroutes?

To protect a particular route from accidental change, use the “Lock” function (on the ROUTING tab) to lock a device. Until the device is unlocked, you cannot make routing changes affecting that device.

If your system provides signals for multiple viewers and you are worried about accidental unroutes in general, you may want to set your system to use Append Mode by default. (From the EDIT toolbar, click SETTINGS.) When Video Commander is in Append Mode, clicking a routed device starts an append rather than starting an unroute.

I have a device which is both a source and a destination, but I usually route these functions separately.

For a device like an editor, you *may* find it easier to delete the source/destination device and create two devices, one for the source (“Editor playback”) and one for the destination (“Editor recording”) so you don't need to worry about Append Mode to have both functions routed at the same time.

A

add a device button	13
Append button	10
Append Mode	17
Append mode	10
arrow	8

C

cable	3, 6, 13
Cancel button	7
CD-ROM	4
COM port	4, 17, 19
Connect Mode	17
connection number	13
connection type	5, 13, 16

D

Data In connector	3
Data Out connector	3
default mode	17
destination device	6, 8
device button	5, 7, 8, 16
device button, add	13
device connection	5, 13, 16
device image	5, 13, 16
device name	5, 13, 16
Done button	7, 8, 9, 11
double-click	8
drag	14

E

Edit Device button	16
Edit toolbar	7, 13, 14, 15, 16, 17, 18

H

hardware fault	21
----------------------	----

I

image	5, 13, 16
input	5, 6, 13, 16
Insert button	11
insert device	5, 11
Insert mode	11
installation	4
IRIS button	7

J

job color	8
-----------------	---

L

Lock button	12
locking	12

M

mono audio	20
Move button	14

N

name	5, 13, 16
New Device button	13
New Device screen	5

O

output	5, 6, 13, 16
--------------	--------------

P

panel size	14
picture	5
Power button	7
power supply	3
preview	5
print	18
Programs menu	4

Q

Quick Start	3
-------------------	---

R

rack	3
Remove button	15
Report button	18
resize	14
routed device	9
router	3, 5
routing panel	7
Routing toolbar	7, 10, 11, 12
RS-422	3
RS-422 converter	4, 19

S

Settings button 17
SetupVCb 4
Size tool 7
sounds 21
source device 6, 8, 10
status bar 7
system tray icon 7

T

terminator plug 3
troubleshooting 19

U

Unlock button 12
unlocking 12
unroute 9

W

web site 7
Windows Explorer 4

Y

Y cable 20

System requirements

- Windows-compatible PC
- Microsoft Windows 98, Me, 2000 or XP
- Video display card with 24-bit color
- CD-ROM drive
- 15MB free hard disk space, minimum

Software specifications

- Connect, Append, Insert routing modes
- Resizable button panel
- User-selectable device icons

Visit the IRIS Technologies, Inc. web site at <http://www.iristech.com> for more information on the complete family of Video Commander signal management solutions